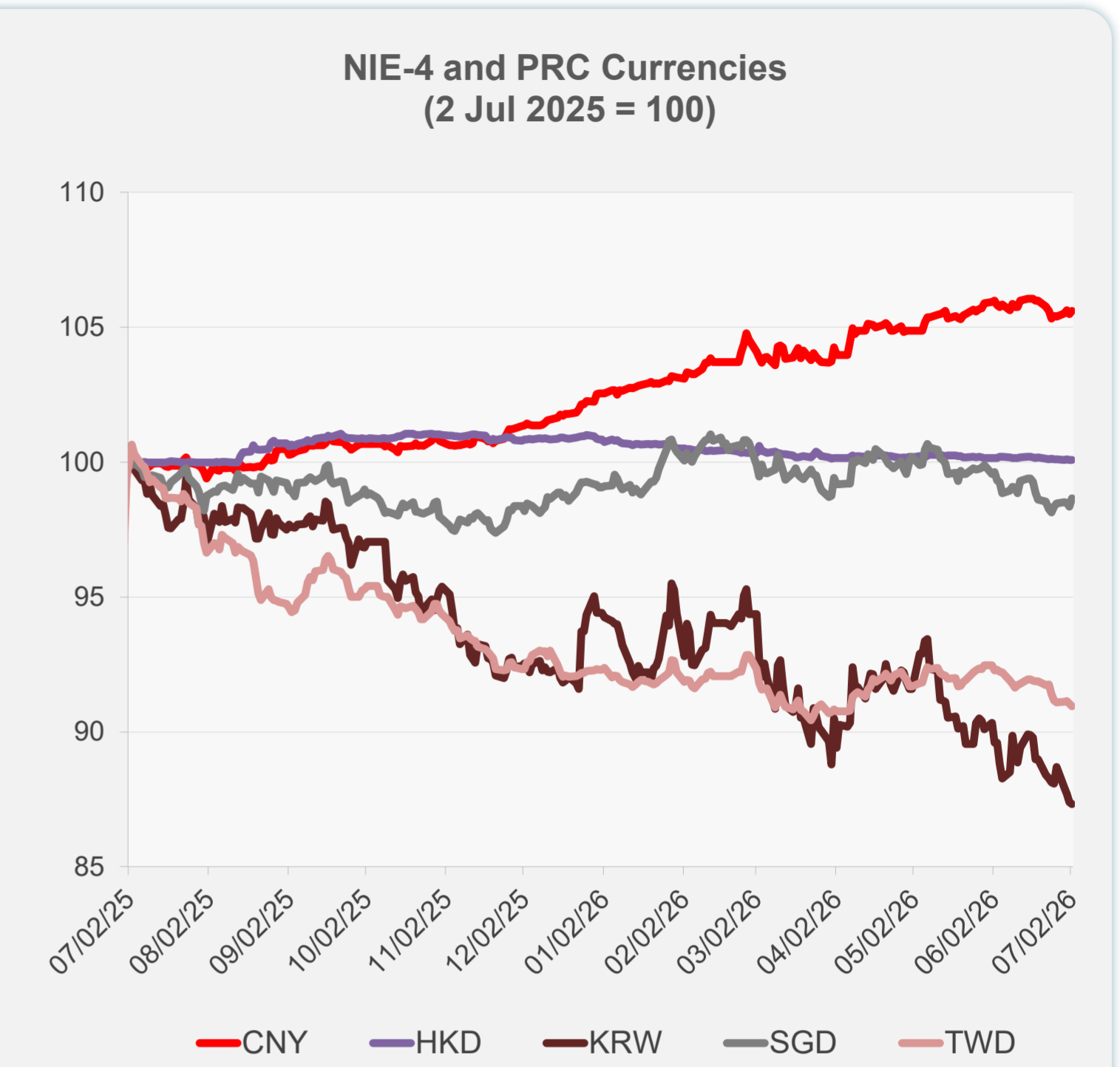
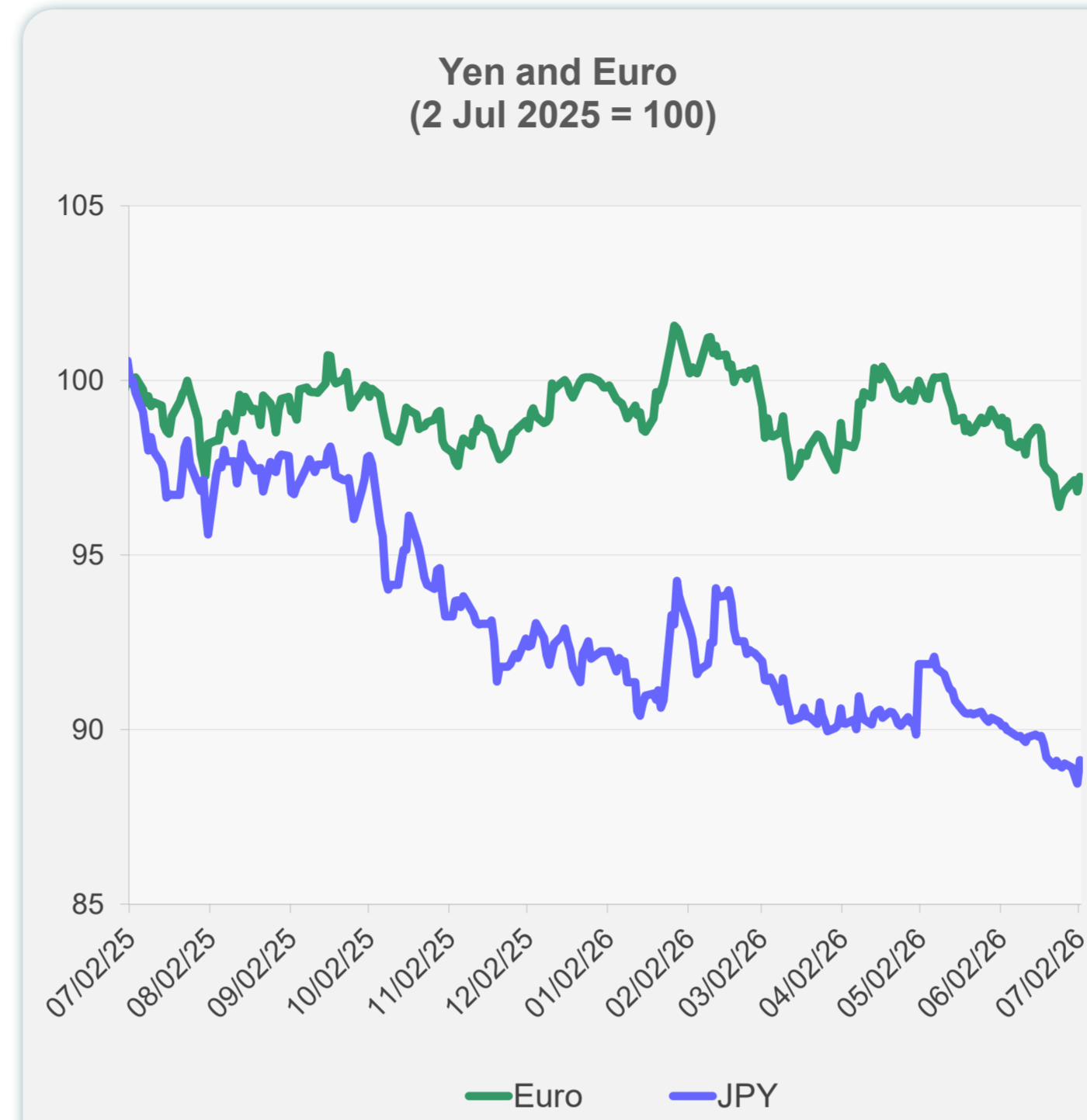
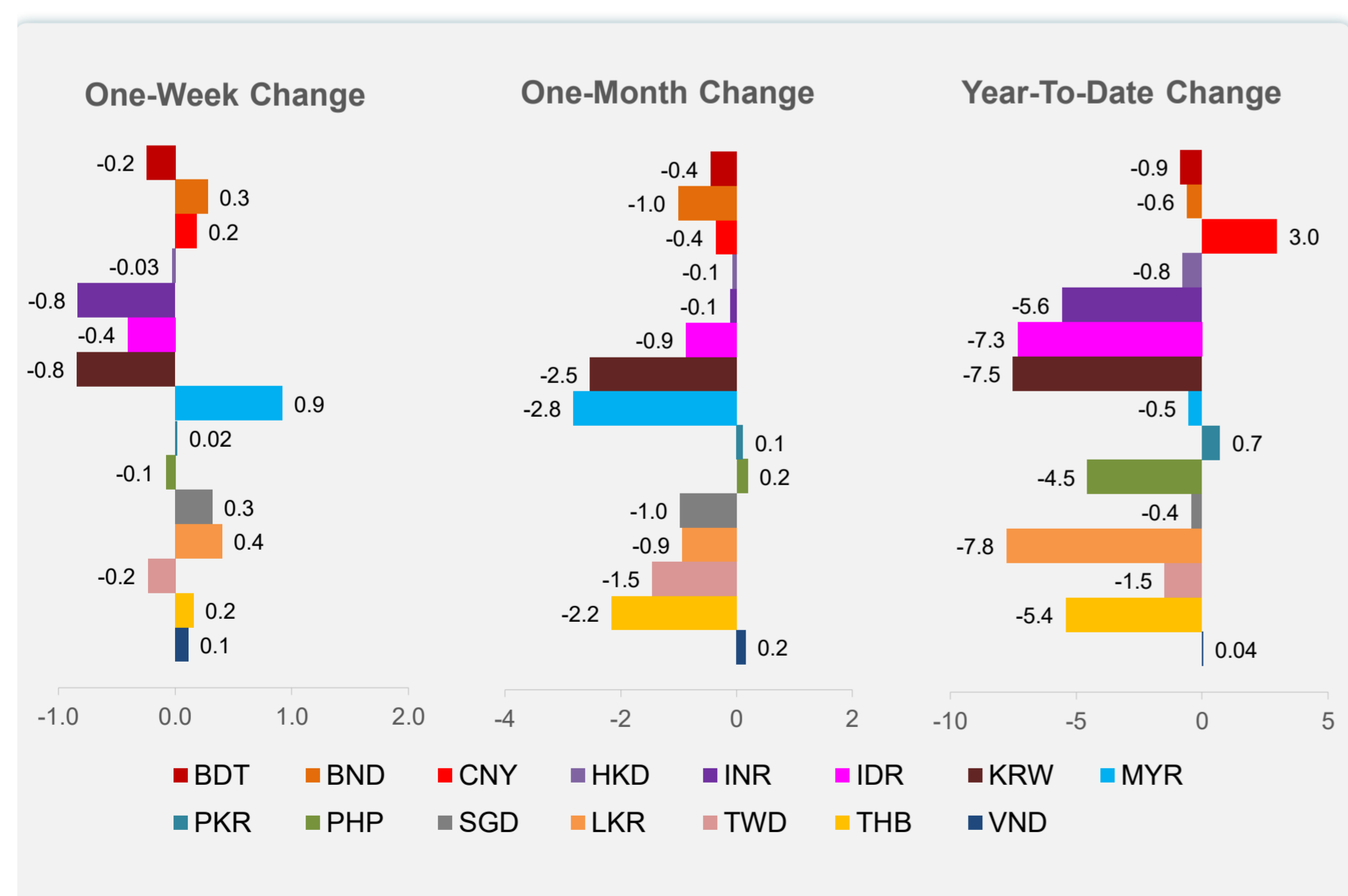
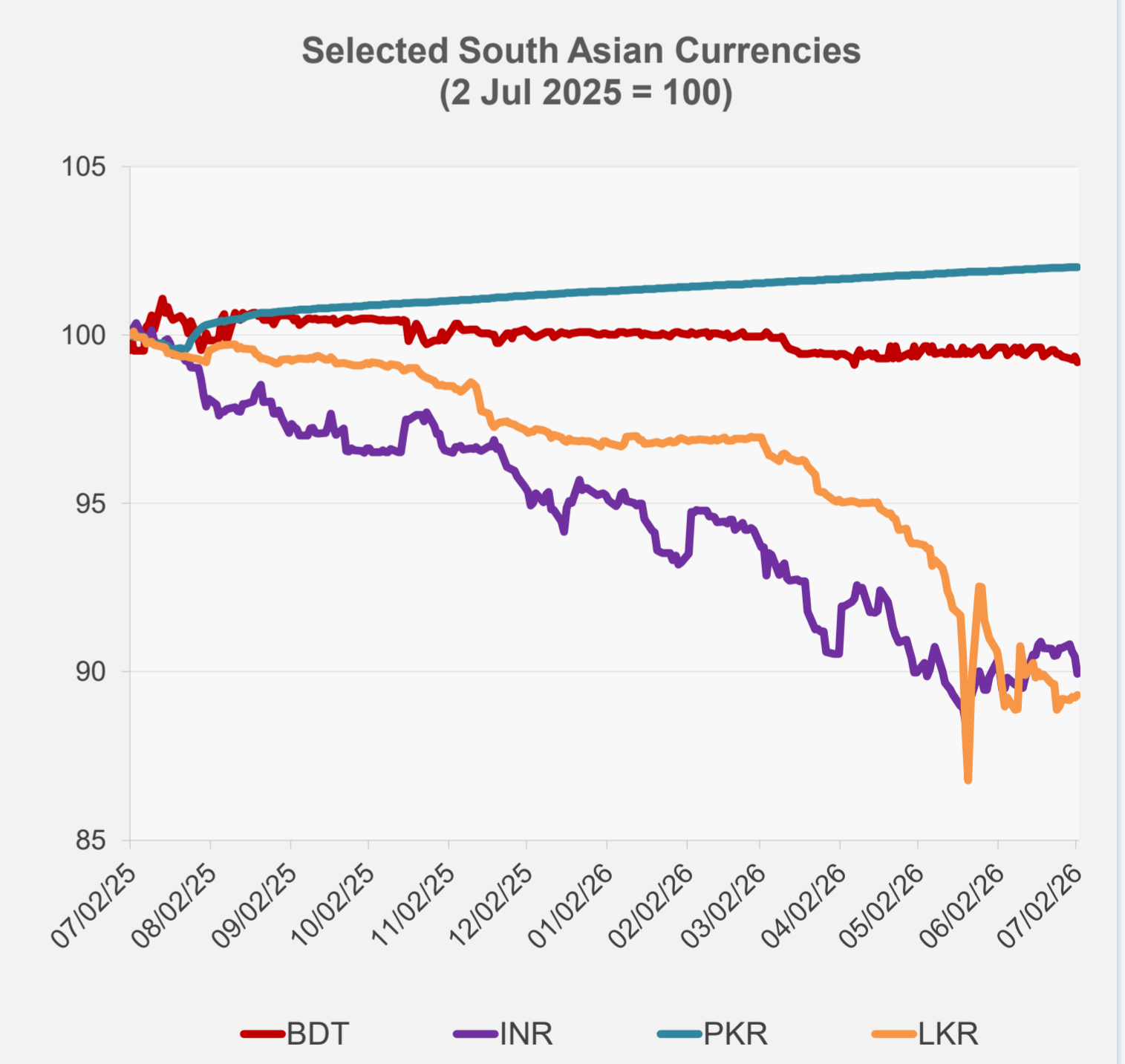
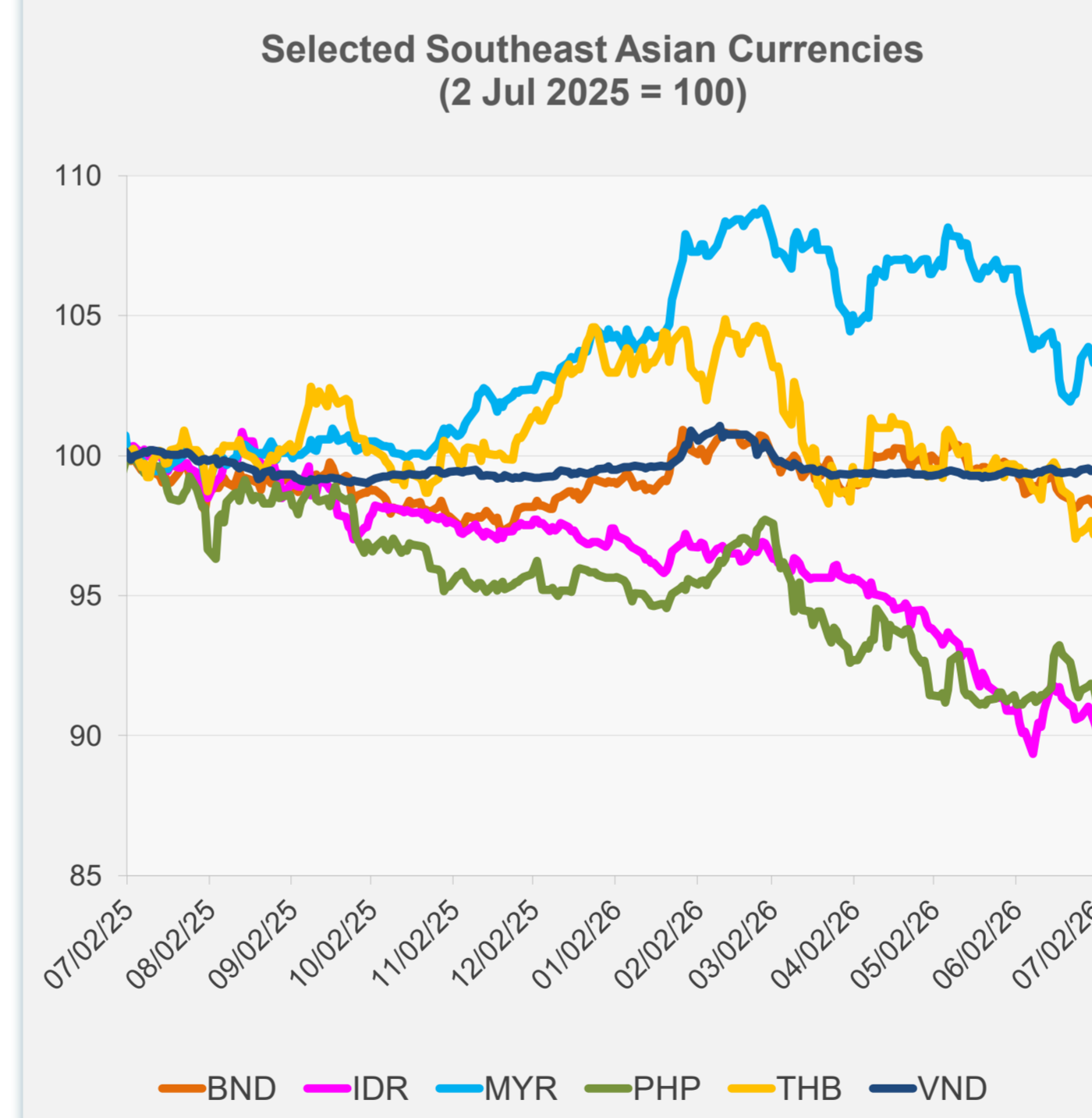


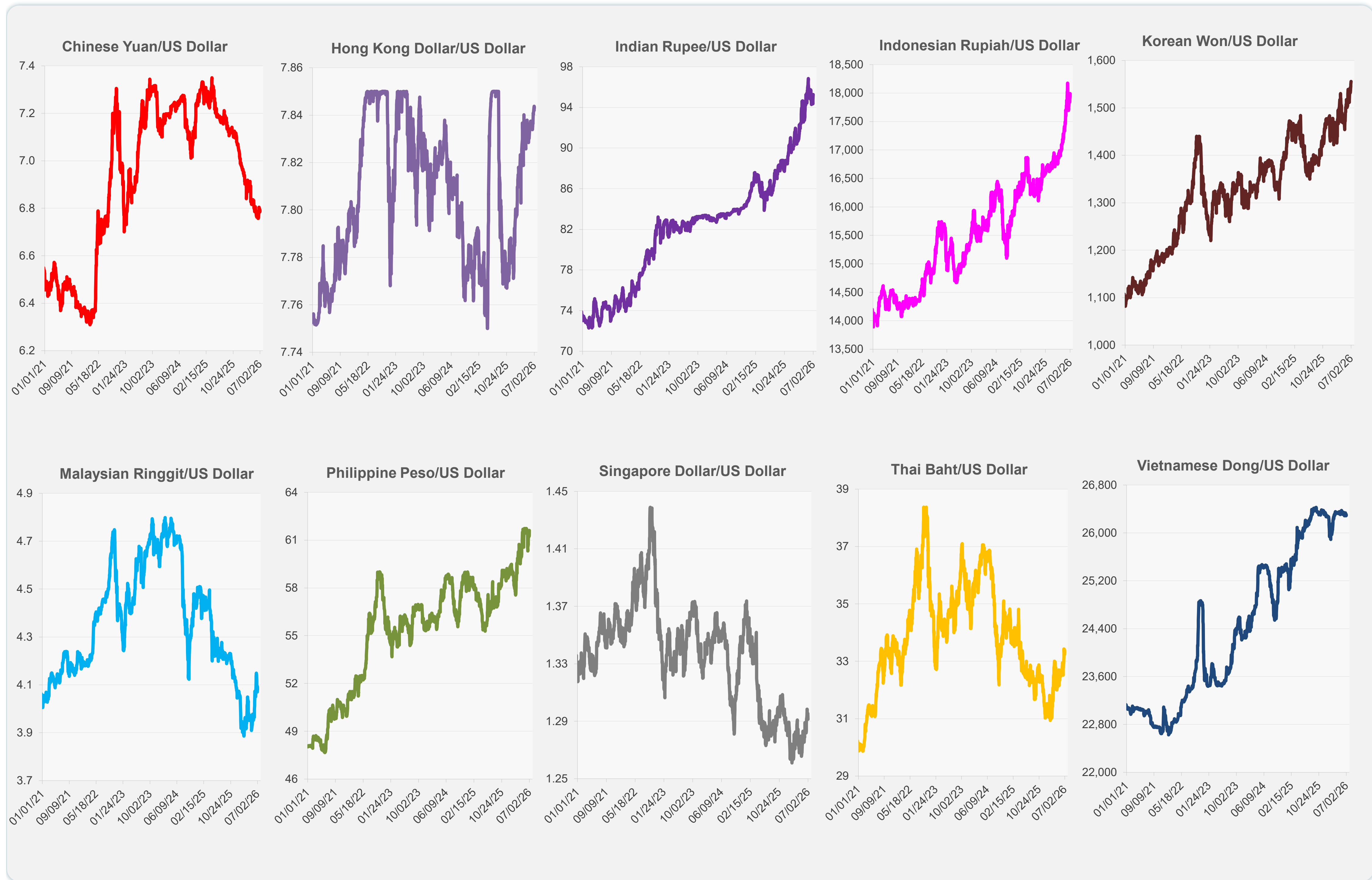
	Latest Closing	% change from Previous Day	% change from 01-Jan-26
Euro	0.87	0.43	-2.57
Japanese yen (JPY)	161.44	0.77	-3.38
Bangladeshi taka (BDT)	123.30	-0.16	-0.85
Brunei dollar (BND)	1.29	0.22	-0.60
Chinese yuan (CNY)	6.79	0.10	2.97
Hong Kong dollar (HKD)	7.84	0.01	-0.76
Indian rupee (INR)	95.27	-0.57	-5.56
Indonesian rupiah (IDR)	17,993.00	-0.32	-7.33
Korean won (KRW)	1,555.80	-0.06	-7.51
Malaysian ringgit (MYR)	4.08	0.34	-0.54
Pakistan rupee (PKR)	278.12	0.01	0.71
Philippine peso (PHP)	61.61	-0.51	-4.55
Singapore dollar (SGD)	1.29	0.31	-0.42
Sri Lanka rupee (LKR)	335.65	0.10	-7.76
Taipei,China NT dollar (TWD)	31.91	-0.11	-1.48
Thai baht (THB)	33.31	0.25	-5.40
Vietnamese dong (VND)	26,290.50	0.04	0.04



NIE = Newly Industrialized Economies



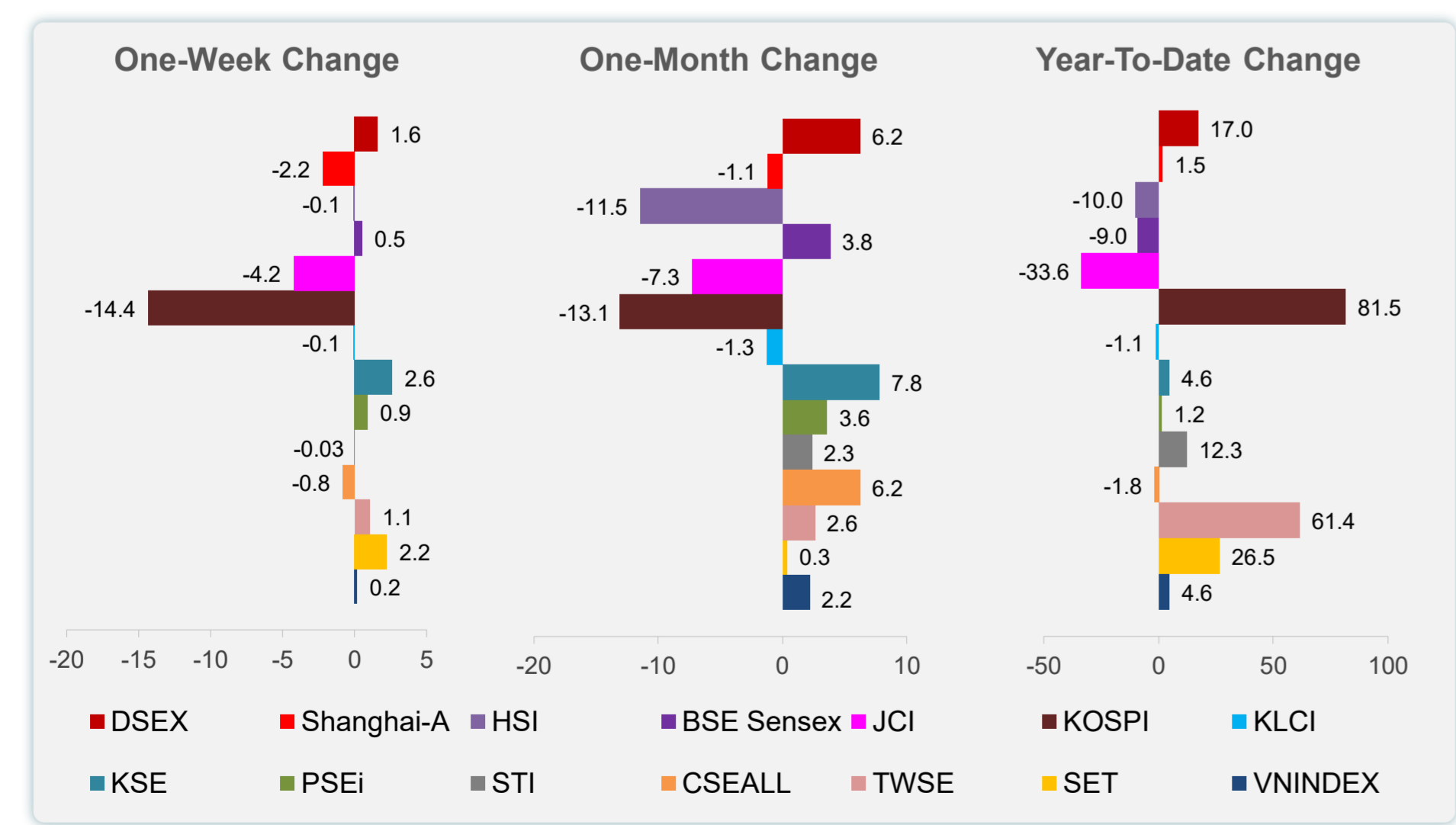
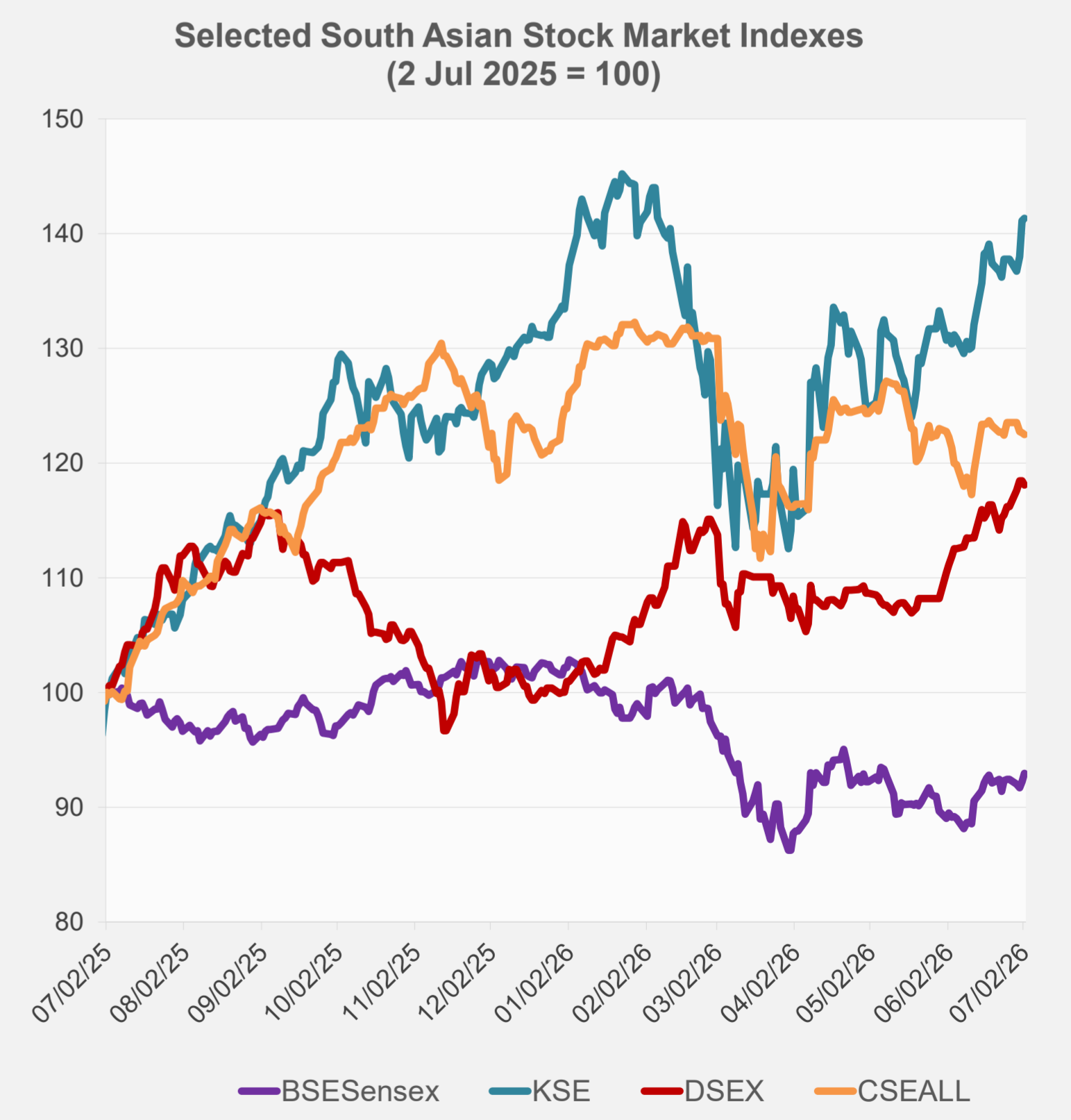
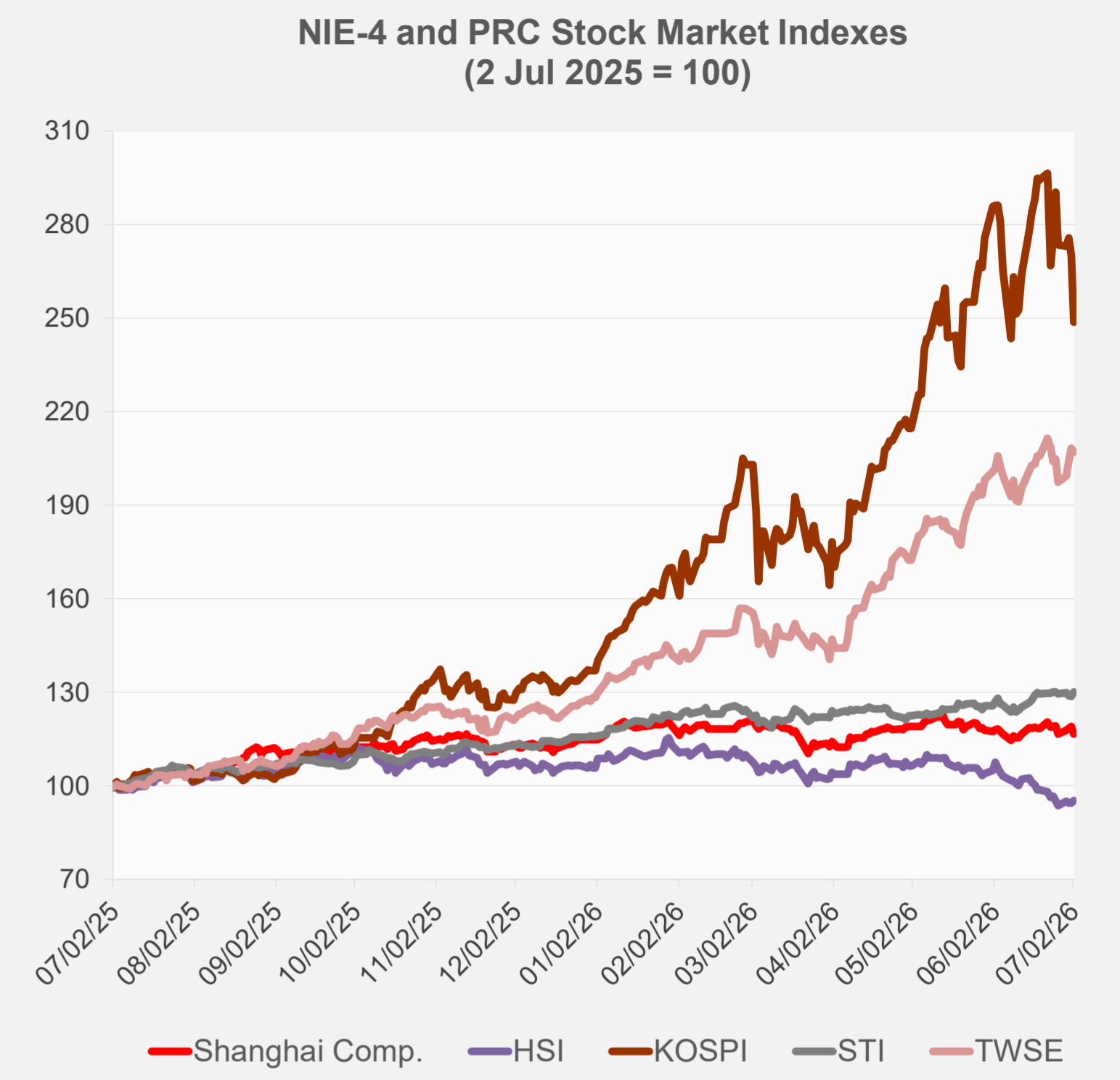
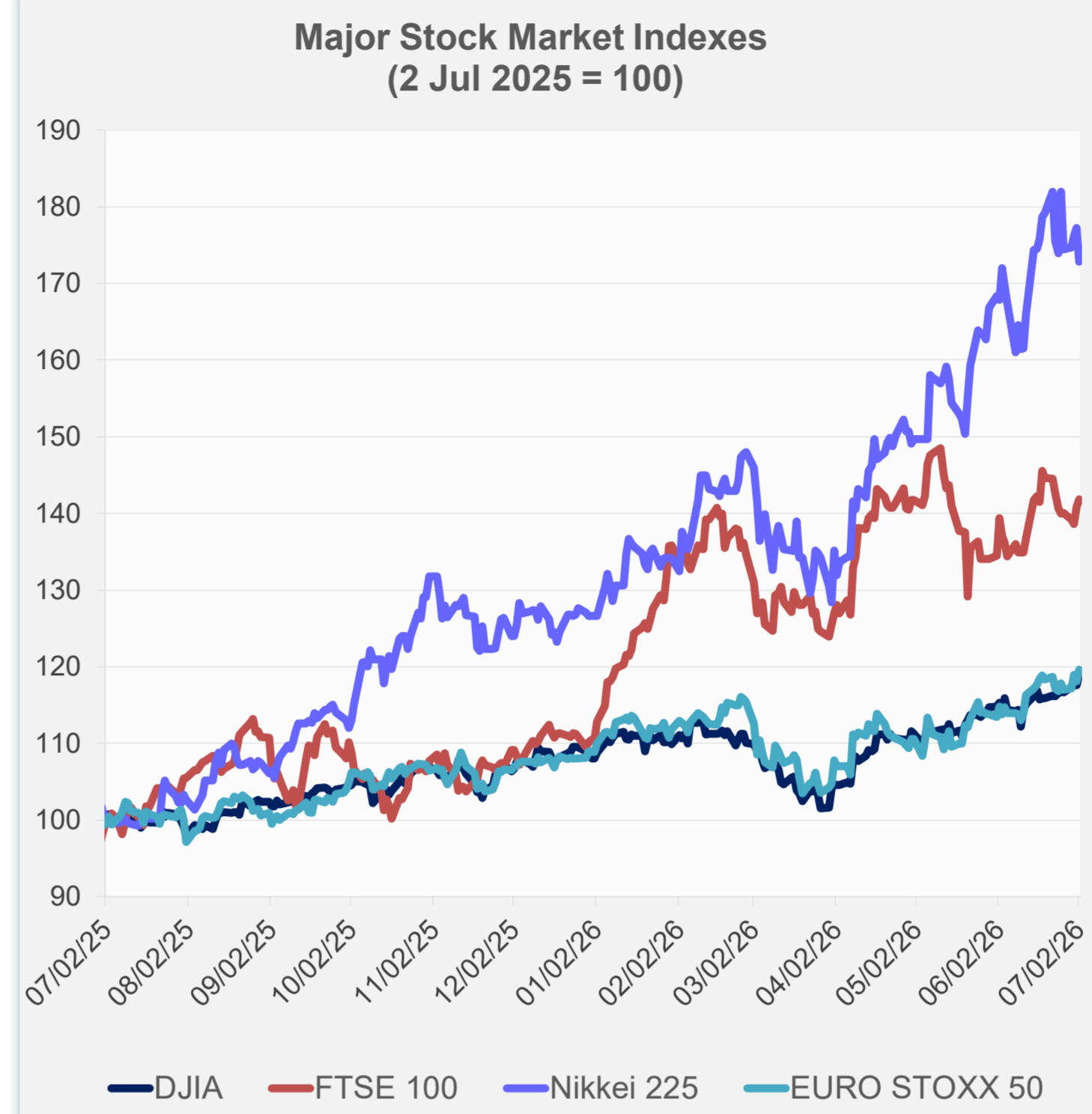
Note: Negative/Decreasing values indicate depreciation of local currency, and positive/increasing values indicate appreciation.
Source: ADB calculations using data from Bloomberg and Haver Analytics.



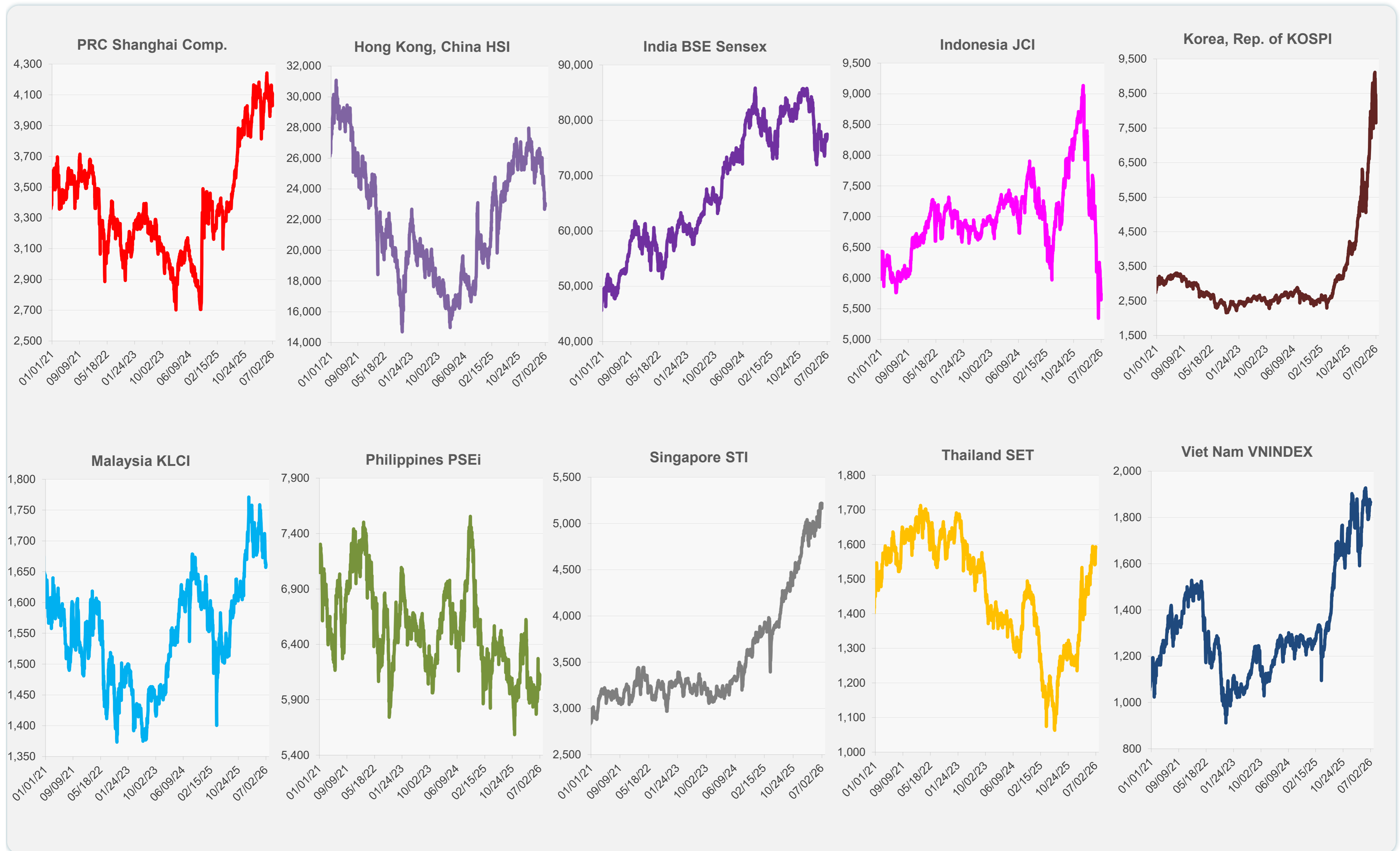
Source: Haver Analytics.

Daily Market Watch
STOCK INDEXES

	Latest Closing	% change from Previous Day	% change from 01-Jan-26
US Dow Jones Ind Avg	52,900.07	1.14	10.06
US NASDAQ	25,832.67	-0.80	11.15
US S&P 500	7,483.24	0.00	9.32
UK FTSE 100	14,455.03	0.73	28.36
EURO STOXX 50	6,360.47	1.24	9.83
Japan NIKKEI 225	68,733.15	-2.47	36.54
Bangladesh DSEX	5,743.86	-0.33	16.97
PRC Shanghai Comp.	4,028.90	-2.03	1.51
Hong Kong, China HSI	23,055.03	0.76	-10.05
India BSE Sensex	77,502.12	0.75	-9.02
Indonesia JCI	5,744.56	0.87	-33.57
Korea, Rep. of KOSPI	7,648.09	-7.89	81.49
Malaysia KLCI	1,661.83	0.30	-1.09
Pakistan KSE 100	184,515.60	0.16	4.56
Philippines PSEi	6,125.72	0.93	1.20
Singapore STI	5,217.15	1.08	12.29
Sri Lanka CSEALL	22,221.91	-0.10	-1.78
Taipei, China TWSE	46,744.16	-0.58	61.39
Thailand SET	1,593.56	0.34	26.51
Viet Nam VNINDEX	1,866.35	-0.05	4.59



Sources: ADB calculations using data from Bloomberg and CEIC Data Company.

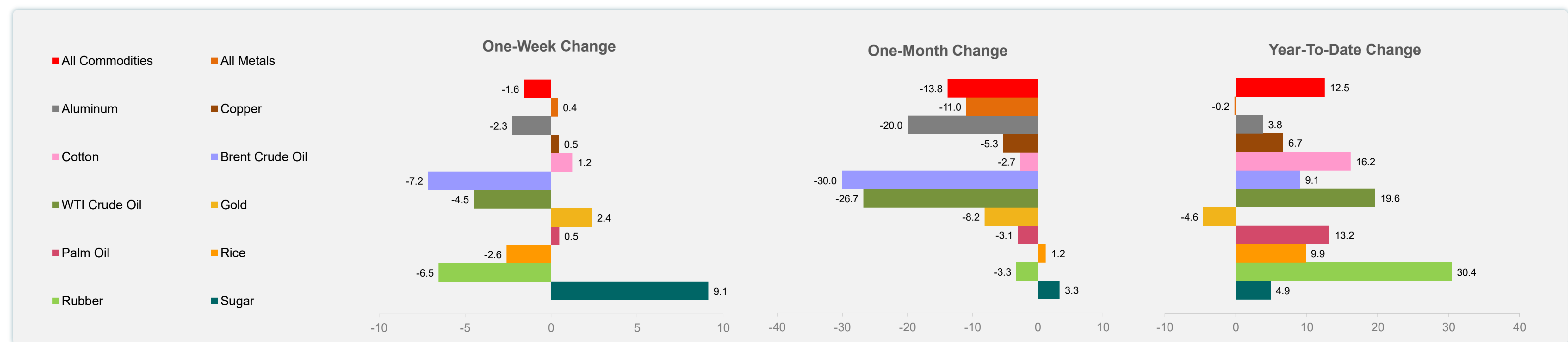
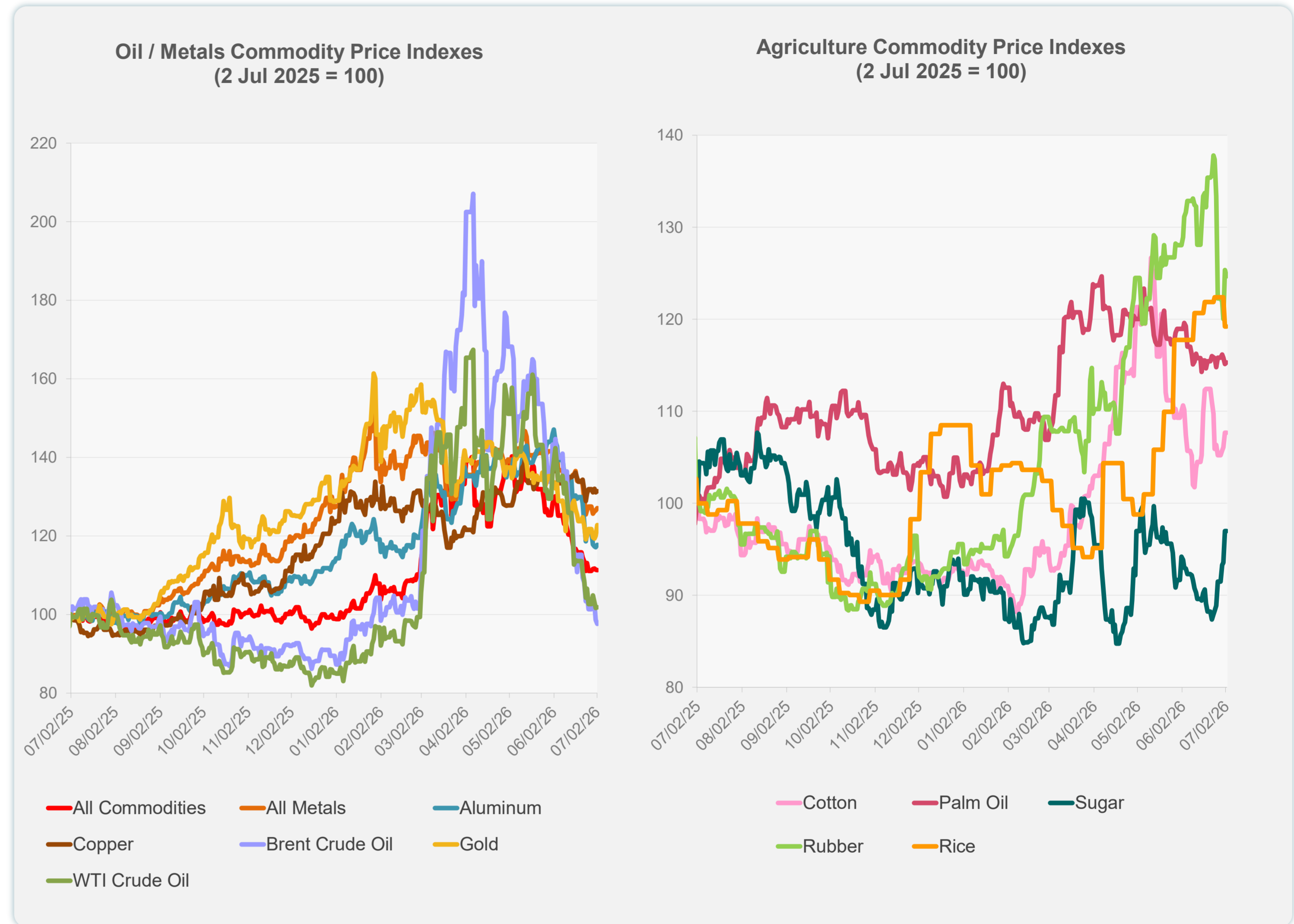


Sources: ADB calculations using data from Bloomberg and CEIC Data Company.

Daily Market Watch
COMMODITY PRICES

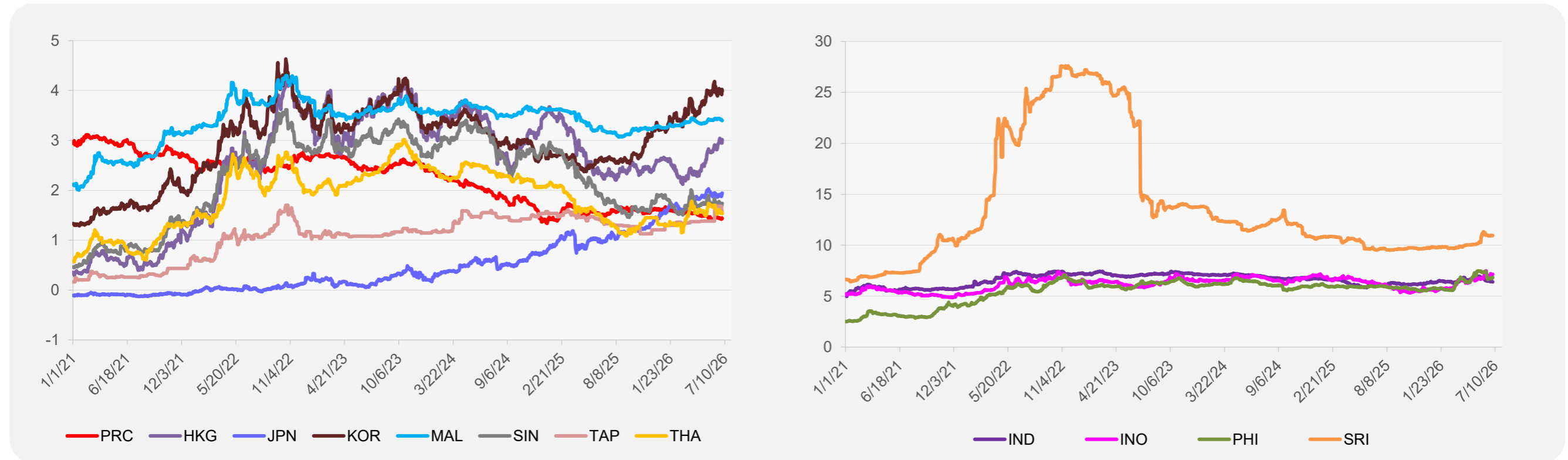
	Unit	Latest Closing	% change from Previous Day	% change from 01-Jan-26
S&P All Commodities	US\$	617.12	-0.05	12.51
S&P All Metals	US\$	442.98	0.48	-0.17
Aluminum	US\$/metric ton	3,082.07	0.52	3.84
Copper	US\$/metric ton	13,287.60	0.29	6.70
Cotton	US cents/lb	72.05	0.00	16.17
Brent Crude Oil	US\$/barrel	68.10	-0.97	9.06
WTI Crude Oil	US\$/barrel	68.69	0.16	19.63
Gold	US\$/troy oz	4,122.35	2.28	-4.56
Palm Oil	US\$/metric tonne	1,096.43	0.16	13.19
Rice ¹	US\$/metric ton	490.00	0.00	9.87
Rubber ²	US\$/kg	280.40	-0.53	30.42
Sugar	US cents/lb	15.52	0.00	4.94

¹ Latest closing price from 24 June 2026.
² Singapore Exchange, Ribbed Smoked Sheet Rubber.

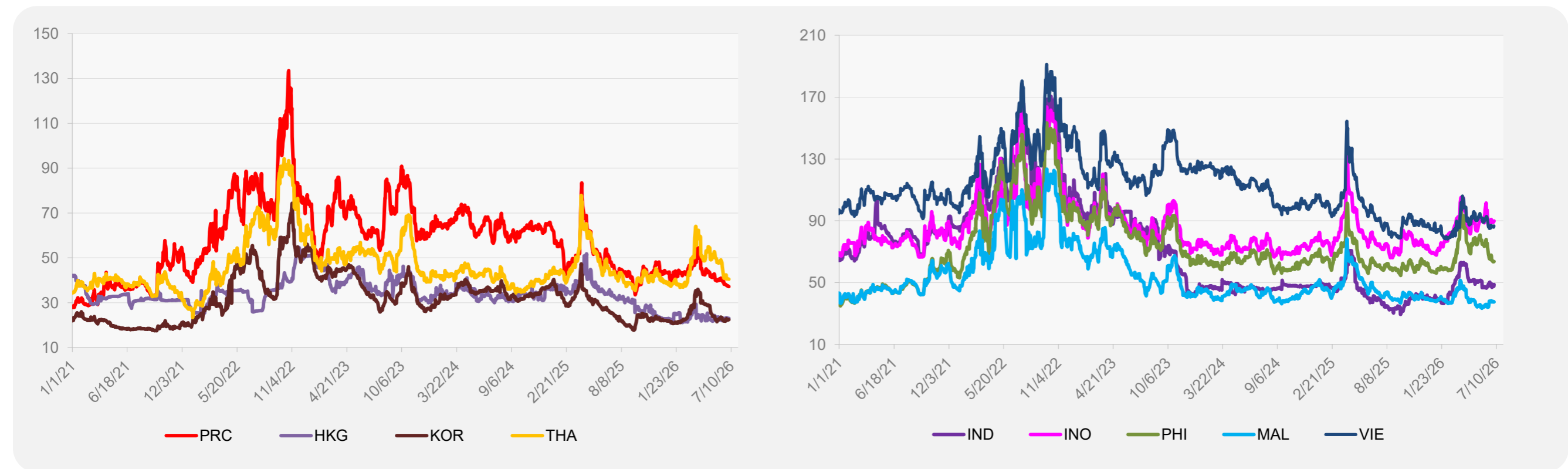


Source: ADB calculations using data from Bloomberg.

5-YEAR LOCAL CURRENCY GOVERNMENT BOND YIELDS (%)



5-YEAR CREDIT DEFAULT SWAP¹



¹ In USD and based on sovereign bonds.
Source: ADB calculations using data from Bloomberg.